

For over 25 years a tradition of-----Quality, Integrity & Leadership

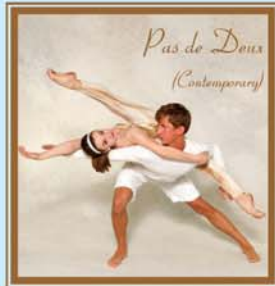
Robert Thomas Dancercenter

info@rtdance.com rtdance.com 515-233-0826

Pre-Register Now <-> New Classes Starting



Pas de Deux (Classical)



*Pas de Deux
(Contemporary)*



Irish



Musical Theatre



Tap



Jazz



Tumbling



Jazz



*Belly
Dance*



Contemporary



Ballet



Tap



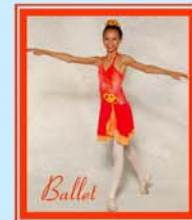
Ballroom



Ballet



Jazz



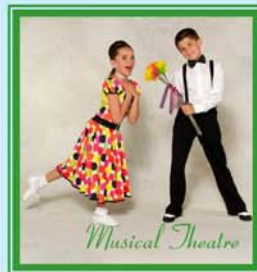
Ballet



*Pointe
(Romantic)*



Hip Hop



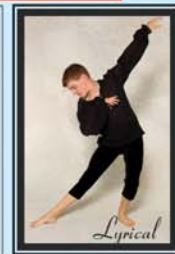
Musical Theatre



*Pointe
(Classical)*



Tumbling



Lyrical

2 STUDIOS TO SERVE YOU

Ames South -319 South 17th
Ames West - 134 Dotson
515-233-0826 * 515-292-4602
Photos by Pete Tekippe Photography



Character



Modern

Class Registration In Progress

Ballet, Tap, Jazz, Irish, Lyrical, Modern, Contemporary, Musical Theatre, Pas De Deux, Hip Hop, Ballroom, Pre-Ballet, Tumbling

Dancercenter Dancers Competition Team
Iowa Youth Ballet - Ames Dance Festival
3yr to Adult * Beginning to Advanced

Dates to Remember...



- **Aug 15**~ Fall Classes Begin~
- **Sept 6** ~ Labor Day Break ~
- **Sept 12** ~ Nutcracker Auditions~
- **Nov 23-28**~ Thanksgiving Break ~
- **Dec 10, 11, 12** ~ Nutcracker ~
- **Dec 19 - Jan 1** ~ Christmas Break ~
- **March 13-19** ~ Spring Break~
- **April 24** ~ Easter Break~
- **May 30** ~ Memorial Day Break ~
- **June 6** ~ Last Class~
- **June 7 & 8** ~ Photo Days ~
- **June 9** ~ Dance Expo Studio Rehearsal ~
- **June 10** ~ Dance Expo Staging ~
- **June 11** ~ Dance Expo ~
- **June 11** ~ Ames Dance Festival ~



Please check website for updates and changes in this information
www.rtdance.com go to "Downloads Page"

Class Schedules

Real Time Class Schedule Available Online

<http://www.rtdance.com/schedules.htm>

Many printed schedules are out of date

Class schedules change without notice and are updated online

Please enroll in class based on grade.

Class size: 6-18 Dance; 6-10 Gymnastics

(Older classes may be larger)

“(Tech)” indicates technique class-no recital, rehearsal, costume, or recital fees

A student may take ANY class and not participate in recital if they so desire

Accelerated Training<> XL Classes

XL Training at “Level A” is open to all....

Placement above “Level A” is by experience.

You may request a placement appraisal at any time

You must take Ballet to participate in a Pointe class.

XL related questions should be directed to

Dancer Desk Manager 515-233-0826 or info@rtdance.com

Iowa Youth Ballet by Audition

IYB related questions should be directed to

Dancer Desk Manager 515-233-0826 or info@rtdance.com

Dancer Desk Competition Team by Audition

DD related questions should be directed to

Dancer Desk Manager 515-233-0826 or info@rtdance.com

Gymnastics available to age two and older

Gymnastics related question should be directed to

Dancer Desk Manager 515-233-0826 or info@rtdance.com



For over 25 years a tradition of-----Quality, Integrity & Leadership
 319 South 17th, Ames, IA 50010 (515) 233-0826 & 134 Dotson Ames, IA 50014 (515) 292-4602

www.rtdance.com <> e-mail: info@rtdance.com

Classroom Attire

"To feel like a dancer or gymnast you must look like a one"

BALLET	Class Level	Attire	Tights	Shoe
	All Girls	Any leotard, any color	Pink	Pink ballet
	<i>Optional: skirts and leg warmers, any color</i>			
	All Boys	Snug T-shirt, black dance pants	White socks	Black Ballet
POINTE	Class Level	Attire	Tights	Shoe
	All	Any leotard, any color	Pink convertible	Fit by instructor
	<i>Optional: skirts and legwarmers, any color</i>			
XL (Ballet/Pointe)	Class Level	Attire	Tights	Shoe
	All Girls	Any all-black leotard	Pink convertible	Pink
	<i>Optional: XL embroidered attire available at the Dancercenter</i>			
	All Males	Fitted t-shirt	Black	Black Ballet
IYB	Class Level	Attire	Tights	Shoe
	All Girls	Any all-black leotard	Pink convertible	Pink
	<i>Optional: IYB embroidered attire available at the Dancercenter</i>			
	All Males	Fitted t-shirt	Black	Black Ballet
TAP	Class Level	Attire	Tights	Shoe
	P/K & EA	Dress to Move	Optional	Black patent theatrical taps
	A & Up	Dress to Move	Optional	Black jazz taps
JAZZ	Class Level	Attire	Tights	Shoe
	EA-No Recital	Form-fitting clothing	Optional	White or Black jazz shoes
	A & Up	Form-fitting clothing	Optional	Black jazz shoes
	<i>No loose cover-ups.</i>			
	<i>Form-fitting clothing allows instructor to see movements and body posture.</i>			
LYRICAL	Class Level	Attire	Tights	Shoe
	All	Form-fitting clothing	Optional	Sandalol
IRISH	Class Level	Attire	Tights	Shoe
	PK,A,B	Dress to move freely	Optional	Ballet shoes allowed for class, Ghillies are required for recital
	XL Soft Shoe	Dress to move freely	Optional	Ghillies
	XL Hard Shoe	Dress to move freely	Optional	Hard shoes or Tap shoes
	<i>No jeans or long-sleeved shirts</i>			
HIP HOP	Class Level	Attire	Tights	Shoe
	All	Dress to Move--Pants/T-shirt	Optional	Street shoes
GYMNASTICS	Class Level	Attire	Tights	Shoe
	All	Form-fitting clothing	Optional	Bare feet
	<i>No T-shirts sweat shirts, shorts; sweat pants, or other loose cover-ups.</i>			
	<i>Form-fitting clothing allows instructor to see movements and body posture.</i>			

Dance Expo

An optional performance experience

Costume Sizing

If you wish to participate in the recital, (Dance Expo) we need to know what size costume you want us to order for you.
Keep your cost low buy giving us accurate information.

Child Sizes	Chest	Chest	Waist	Waist	Hips	Hips	Girth	Girth	Inseam
XSC	21	22	19	20	21	23	36	39	18
SC	23	25	21	22	24	25	40	42	20
INT	26	27	23	24	26	27	43	45	24
MC	28	29	24	25	28	30	46	49	26
LC	30	32	26	27	31	33	50	54	29
XLC	33	35	28	29	34	36	55	57	29

Adult Sizes	Chest	Chest	Waist	Waist	Hips	Hips	Girth	Girth	Inseam
PA	30	32	23	24	31	33	53	55	27
SA	33	34	25	26	34	36	56	58	30
MA	35	37	26	29	37	39	59	61	32
LA	38	41	30	33	40	43	62	64	33
XLA	42	44	34	36	44	46	65	67	34

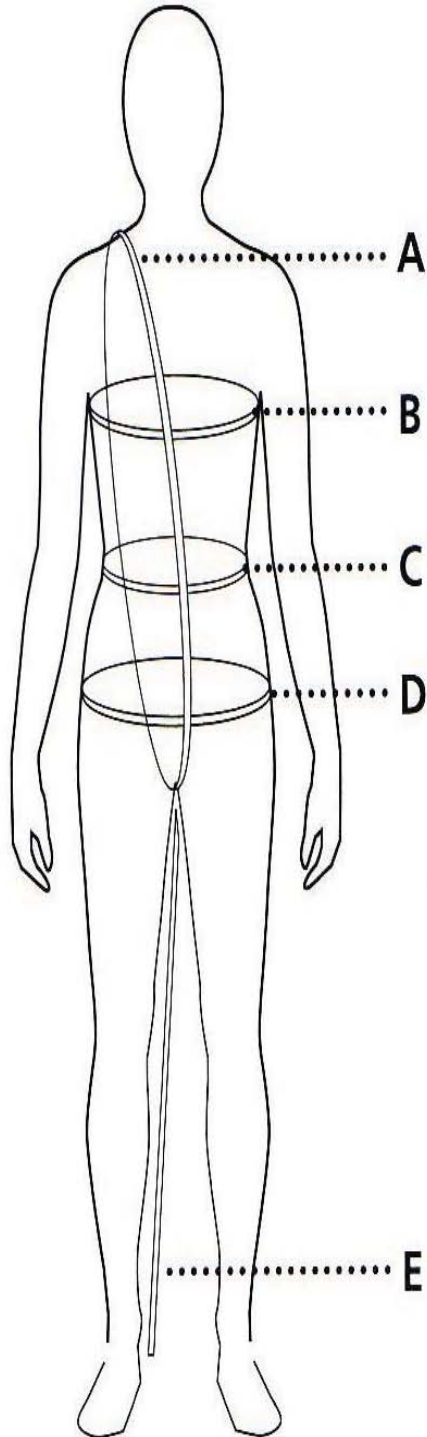
Student _____ Address _____ Boy ___ Girl ___
 Last First Street City State Zip

Phone (H) _____ Parent/Guardian: Print _____ Signature _____

1) _____ 2) _____ 3) _____
 Class Day Time Class Day Time Class Day Time

Measurements for Recital Costume _____ >> _____
 Please anticipate growth Bust Waist Hips Girth Inseam Size (see Size Chart)

Please size carefully and return by Nov 1st.
You are responsible for the size of your performer's costume.
If you neglect to submit your size requests by Nov 1st our best guess will be used.
Costumes need to be ordered in November and pre-paid to receive maximum discounts.
These discounts keep your costs as low as possible.
Costume exchange fees are necessary if your costume needs to be exchanged.
!! PLEASE RETURN TO DESK STAFF BY 11/1!!
OR MAIL TO DANCENTER PO BOX 253 AMES IA 50010



A) GIRTH: Measure from the center of one shoulder, down the front through crotch and up the back to starting point.

B) CHEST: With arms relaxed down at sides, measure around the fullest part of chest, keeping tape measure parallel to the floor.

C) WAIST: Measure around natural waistline, the narrowest part of the upper body (not over shirt or pants).

D) HIPS: Measure around fullest part of the lower body, keeping tape straight and parallel to the floor.

E) INSEAM: Measure inside of leg, from the crotch to 2 inches below the ankle bone.



Pointe

What is XL?
 The XL Dance Program is designed for students pursuing a more aggressive approach to dance technique training. Professional, experienced faculty train dancers at an accelerated level.



Jazz



Modern

XL Levels
 XL students take full single discipline classes. Ballet class is required to take a Pointe class. Placement in XL Levels A-E is based on the dancer's ability and is at the Director's discretion. New students welcome!

EXCEL IN DANCE...

ENROLL IN THE XL PROGRAM AT THE

Robert Thomas
DANCENTER



Character



Pas de Deux

For detailed listing of all Fall XL Classes:
www.rtdance.com



To Enroll in XL Classes...
 Call 515-233-0826
 or E-Mail: info@rtdance.com

XL Dress Code
 Female students wear black leotards (Optional: XL embroidered attire available at the Dancer Center) with pink tights and shoes in ballet and pointe classes. Warm-ups may be worn for the first few combinations at the barre. Hair is to be pulled away from face and secured. Male students wear fitted t-shirt and black tights, and shoes.



Ballet



Irish



Tap

Pictures available for purchase from Pete Tekippe Photography of Story City, IA